



10 Cherry Tree Dell, Nether Edge, Sheffield, S11 9DN

Saxton Mee

10 Cherry Tree Dell

Nether Edge

Guide Price

£190,000

GUIDE PRICE £190,000 - £210,000

Located in a fantastic position within a sought-after development, ideally placed for access to Sharrow Vale, Brincliffe and Nether Edge. This stylish first-floor apartment offers light and spacious accommodation with its own private entrance, a modern kitchen and bathroom fitted in recent years, and a larger-than-average garage. Benefits include gas central heating with a combination boiler. No onward chain – perfect for first-time buyers or downsizers.

A private entrance opens onto a staircase leading up to the apartment. The lounge is bright and welcoming, with dual aspect windows providing plenty of natural light. It features tasteful décor, beautiful wooden flooring, and access leading through to the kitchen. The modern kitchen is fitted with an array of matching wall and base units.

There are two well-presented bedrooms, including a double master, and a single second bedroom ideal as a guest room or home office. The bathroom has a modern white suite with bath and shower over, glass screen, vanity wash basin and WC, finished with attractive tiling.

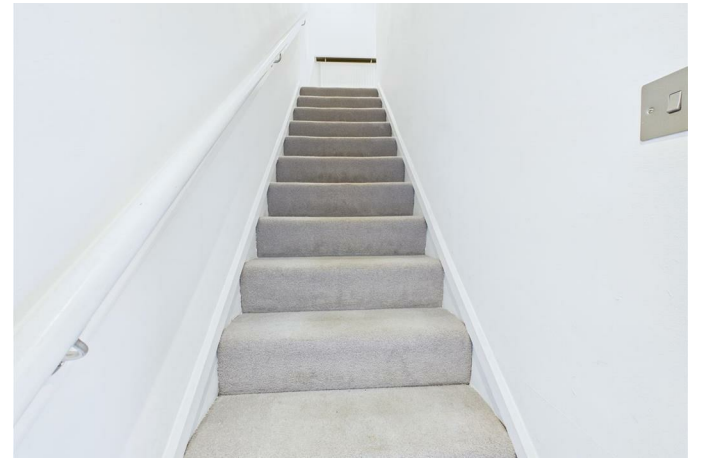
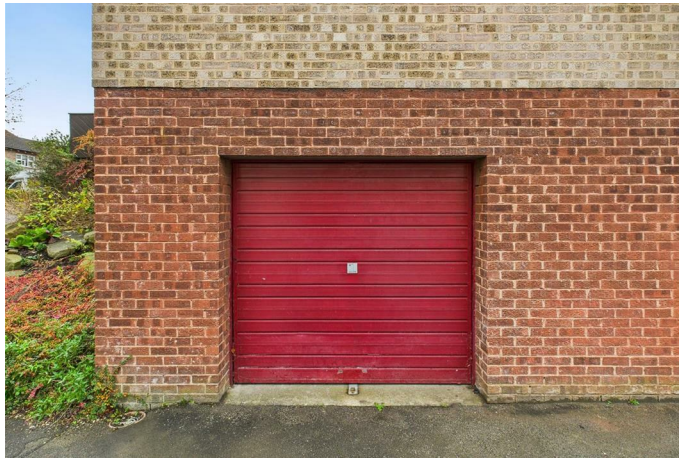
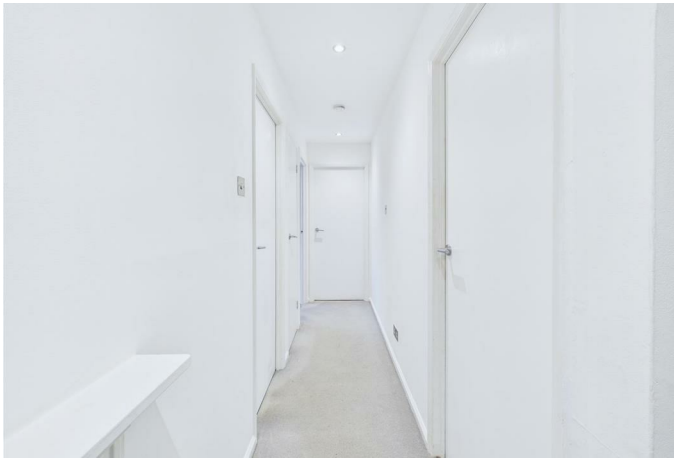
Cherry Tree Dell is set back from Cherry Tree Road and offers residents' parking and well-maintained communal gardens. Apartment 10 benefits from a larger-sized garage with power and lighting, plus an outdoor storage area near the entrance.

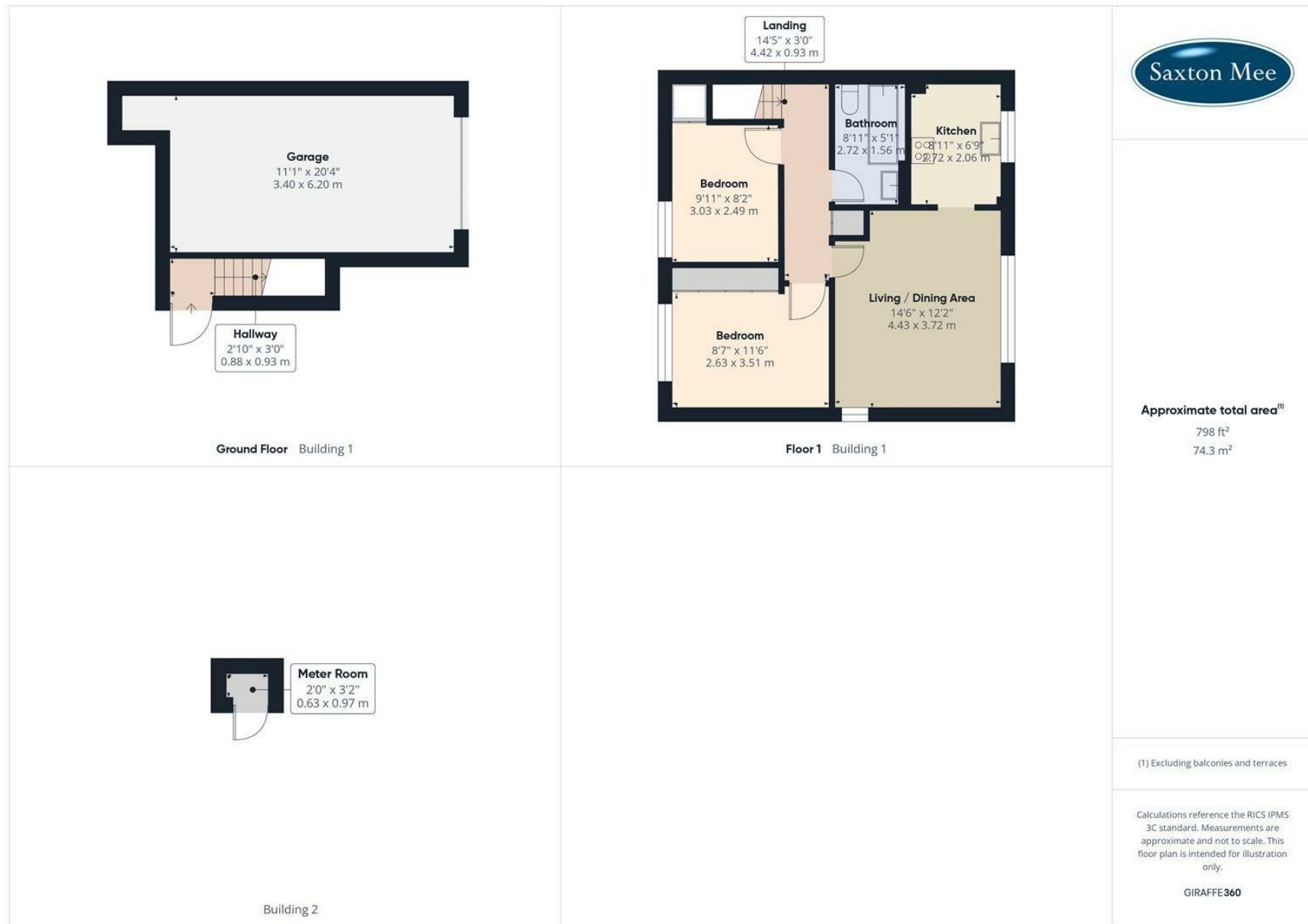
This popular and peaceful development enjoys a leafy setting while being close to Sharrow Vale and Nether Edge's cafés, restaurants, shops, and parks. Excellent transport links provide easy access to the city centre, hospitals, universities, train station, and the Peak District.



- No onward chain!
- Fantastic position within a highly sought-after development, ideally placed for Sharrow Vale and Nether Edge
- Stylish first-floor apartment with light and spacious accommodation
- right lounge with dual aspect windows, neutral décor, and wooden flooring
- Two well-presented bedrooms – a double master and a versatile single room (ideal for guest or home office)
- Fitted Wardrobes
- Contemporary bathroom with modern white suite, bath with shower over, glass screen, vanity wash basin, WC, and attractive tiling
- Peaceful, leafy setting close to cafés, restaurants, shops, and parks
- Excellent transport links to city centre, hospitals, universities, train station, and the Peak District
- Perfect for first time buyers, downsizers or investors!







While we endeavour to make our sales particulars fair, accurate and reliable, they are only a general guide to the property and, accordingly, if there is any point, which is of particular importance to you, please contact the relevant office. The Agents have not tested any apparatus, equipment, fittings or services and so cannot verify they are in working order. The buyer is advised to obtain verification. Please note all the measurement details are approximate and should not be relied upon as exact. All plans, floor plans and maps are for guidance purposes only and are not to scale. Under no circumstances should they be relied upon as exact or for use in planning carpets and other such fixtures, fittings or furnishings. YOUR HOME IS AT RISK IF YOU DO NOT KEEP UP REPAYMENTS ON A MORTGAGE OR OTHER LOAN SECURED ON IT. 'A Life Assurance policy may be requested.' 'Written Quotations of credit terms available on request.'

Banner Cross
T: 0114 268 3241
E: bannercross@saxtonmee.co.uk
www.saxtonmee.co.uk

Hathersage
T: 01433 650009
E: hathersage@saxtonmee.co.uk

Bakewell
T: 01629 815307
E: bakewell@saxtonmee.co.uk

Matlock
T: 01629 828250
E: matlock@saxtonmee.co.uk

